



DELMÅL 8.9



SDG-del mål 8.9: Inden 2030 skal vi vedtage og implementere politiske beslutninger for at fremme bæredygtig turisme, der skaber jobs og promoverer lokale produkter og kultur.

11 BÆREDYGTIGE BYER OG LOKALSAMFUND



15 LIVET PÅ LAND



Masterplan Lild Strand 2018-2030

Visions and Objectives
Version 10, October 2025
(Version 1,0: April 2018)

HAWBOERNES FORENING, LILD STRAND

15. OKTOBER 2025

Table of Contents

1	Executive Summary	3
2	Masterplan for Settlement and Identity	4
2.1	Foundation Funding for Lild Strand Projects	7
3	Lild Strand: DNA, Identity, and Sense of Belonging	8
3.1	Status – Who, How Many, and How?	10
4	Framework Projects in Masterplan Lild Strand	11
4.1	Nationalpark Thy from Agger to Bulbjerg	11
4.2	”Dark Sky Park Bulbjerg”, International Certification	15
4.3	The Planet Trail in ”Dark Sky Park Bulbjerg”	16
5	Lild Strand Projects in the Masterplan	17
5.1	Coastal Terraces at the Lild Strand Landing Site	17
5.2	Picnic House at the Lild Strand Landing Site	18
5.3	Lild Strandkær – Nature Restoration (Inner Part)	19
5.4	Communication of Cultural Heritage via Museum Thy	20
5.5	The Creativity House in Lild Strand	21
5.6	Community Centre: Hawboernes Hus Version 2,0	22
5.7	Analogue and Digital Orienteering i Lild Plantation	23
5.8	Traffic Safety in the Lild Strand Area	24
5.9	Development Project Kystsporet (The Coastal Trail)	24
5.9.1	Renovation of the Signal Mast Square	24
5.10	Memorial and Reflection Space at the Lild Strand Church	25
6	Lild Strand to day...	26
6.1	Lild Strand Landing Site	26
6.2	Lild Strand Boat Guild – living UNESCO Cultural Heritage	26
6.3	Church, Associations and Community Life	27
6.4	Trade and Infrastructure	27
6.5	Lild Strand and the EU: Smart Village – EU Smart Rural	27
6.6	Cooperation in the Kystbyernes Netværk (Coastal Towns’ Network)	28
7	Lild Strand as case in Innocoast-project	29

1 Executive Summary

The overall objectives of the **Lild Strand Masterplan 2018–2030** are to:

- attract permanent residents to Lild Strand
- promote a moderate and balanced development of small-scale, quiet tourism in Lild Strand
- support business development and settlement on the Hannæs peninsula in general

The tourism segment targeted by Lild Strand consists of visitors who prioritise authenticity, sustainability and unspoilt nature, and who seek tranquillity, peace and individual nature experiences.

Lild Strand is a coastal village on the west coast of Thy, but it is not included in the development strategies for Cold Hawaii. Lild Strand also differs from the other five coastal villages through its connection to the Limfjord region, due to its location in North Thy on the Hannæs peninsula.

For this reason, the area is well suited to developing its own profile – also within **National Park Thy** – as the park's "*quiet carriage*", as well as an internationally certified Dark Sky park, **Dark Sky Park Bulbjerg**.

Strengthening Identity to Promote Settlement and Quiet Tourism

As a contribution to the continued development of Hannæs, the Municipality of Thisted, and National Park Thy, Lild Strand contributes with two overarching initiatives that help frame the broader development of business activities and tourism in Thy:

1. Inclusion in National Park Thy

The inclusion of the Vigsø–Bulbjerg area in National Park Thy as "*the quiet part of National Park Thy*". Negotiations with National Park Thy began in 2017. In January 2021, the board of the national park decided to initiate a process for a major expansion. Expansion of the park is being reconsidered in 2026.

2. Establishment of Dark Sky Park Bulbjerg

The creation of a certified Dark Sky Park Bulbjerg in the area Bulbjerg – Troldesting – Lild Strand. A partnership agreement has been established between The Danish Nature Agency (Naturstyrelsen Thy) and Hawboernes Association. International certification as Dark Sky Park Bulbjerg was achieved on 14 December 2023.

Development in Lild Strand 2016–2025

Since 2016, residents and holiday-home owners in Lild Strand have collectively transformed a period of decline into a process of development through local development workshops and elaboration of the **Lild Strand Masterplan** (first edition April 2018).

Key initiatives include:

1. **Picnic House** at the landing site (completed June 2020)
2. **Coastal Terraces** at the landing site (completed May 2022)

3. **Communication of cultural heritage** in cooperation with Museum Thy (initiated March 2019)
4. **Publication of the book "Lild Strand i mands minde"** (December 2020)
5. **Nature restoration of the inner Lild Strandkær area** (completed September 2020)
6. **Website:** <https://hawboerne.dk/> (launched 2019)
7. **Traffic safety improvements in Lild Strand** (June 2022/ongoing)
8. **The Creativity House, Lild Strand** (implemented 2018–2023)
9. **Renovation of Hawboernes House, Lild Strand** (2022–2024, 2026)
10. **Dark Sky Park Bulbjerg** (start 2019 – certification 14 December 2023)
11. **Expansion of National Park Thy** (process ongoing since 2018)

2 Masterplan for Settlement and Identity

This "Masterplan for Lild Strand 2018–2030 – Visions and Objectives" has been prepared by the **Development Group of Hawboernes Association in Lild Strand**. Members of the Development Group and its projects are presented in the organisational overview on **page 5**.

The **Lild Strand Masterplan** aims to:

- describe strategies, visions and objectives for development in Lild Strand
- present individual projects and report on their progress
- keep dialogue and collaboration active in Lild Strand – in cooperation with the wider Thy region

**Main objectives of the Lild Strand Masterplan:
Settlement and a strong local identity by means of**

"Outdoor communities must themselves demonstrate their interest and their willingness to adapt and transform. Citizens know their local communities best and should contribute to developing a vision and, not least, initiating concrete projects."



SETTLEMENT: Nationalpark Thy

- Part of Nationalpark Thy
- Coastal terraces and picnic house
- Renovated community center
- Town renewal and nature restoration
- Homepage and Creativity House
- Development of local trade and settlement



IDENTITY: Dark Sky Park Bulbjerg

- Protected nature
- International certification
- Sustainability, tranquility and authenticity
- Quiet small-scale tourism
- Cultural heritage



- to attract permanent residents to Lild Strand
 - to develop the identity of the area as a destination for **quiet, small-scale tourism**, respecting local aspirations and the DNA of Lild Strand: nature, coastal fishing culture, tranquillity, authenticity and deep night darkness in "*nature's quiet area*"
 - to contribute to positive development on the **Hannæs peninsula** (settlement and business development)
 - to contribute to positive development in **Thy** through the framework projects described in the masterplan
- to support the development strategies already adopted for Thy

Alignment with Overall Strategies

The masterplan is aligned with several broader development strategies:

- **"Masterplan Hannæs-Østerild: Life at the Centre" (2018)**
- input from a series of **development workshops in Lild Strand since 2016**
- the **vision and mission of National Park Thy and the National Park Plan**
- the **strategic development plan of Thisted Municipality: "Thy on the Front Foot"**

Organisational Framework and Communication

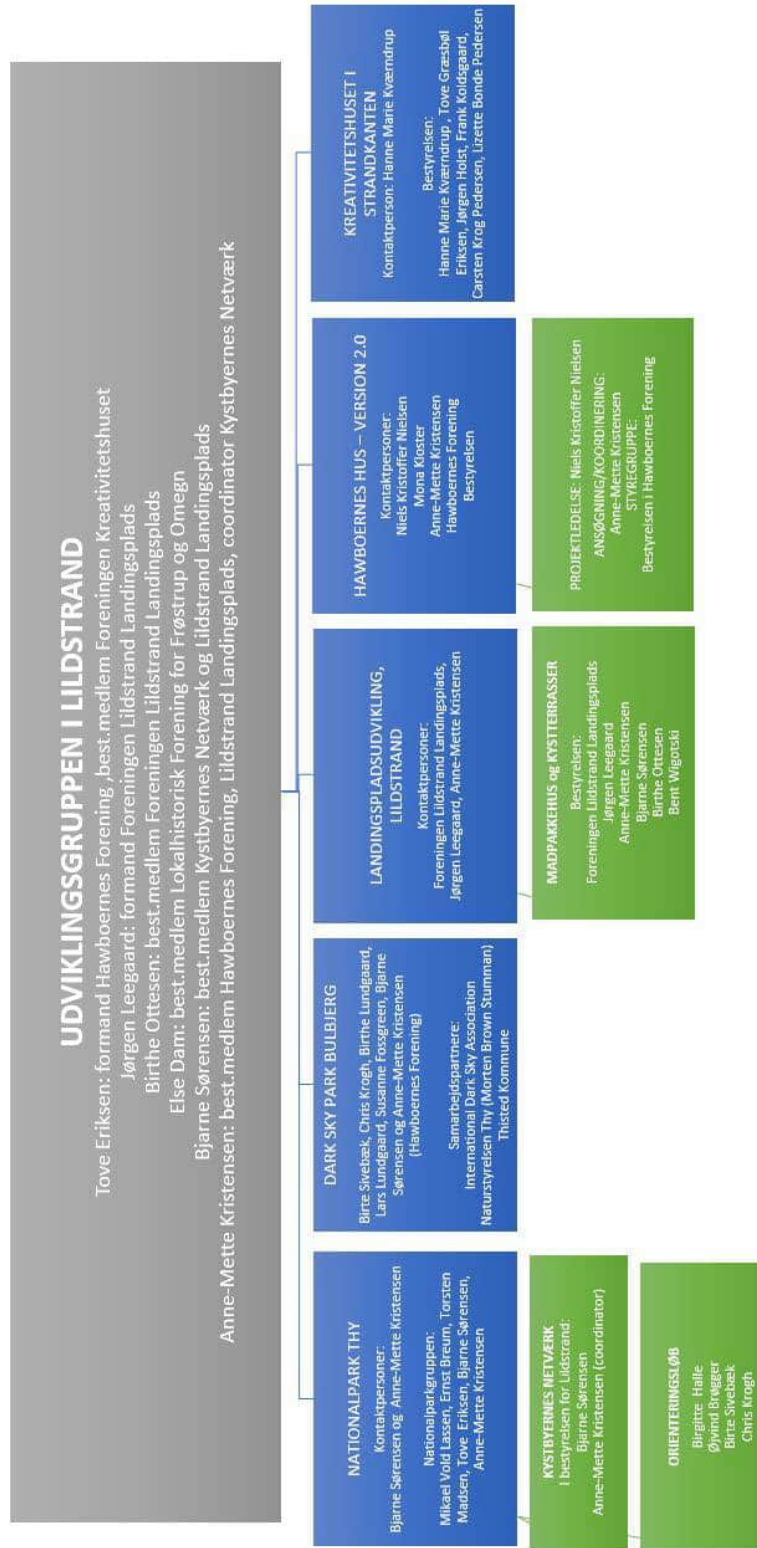
Communication between the Development Group and **the municipality, authorities, institutions and foundations** takes place through the following associations and initiatives:

National Park Thy, Dark Sky Park Bulbjerg, Hawboernes Hus (Version 2.0) and orienteering activities

Hawboernes Association, Lild Strand
CVR 36265159
<https://hawboerne.dk/>

Landing Site Development / Coastal Terraces and Picnic Shelter
Association Lild Strand Landing Site
CVR 38464760

An independent association operating outside the Development Group.
www.kreativitetshuset.dk
The Creativity House, Lild Strand
CVR 39481871



2.1 Foundation Funding for Lild Strand Projects

13,000,000 DKK

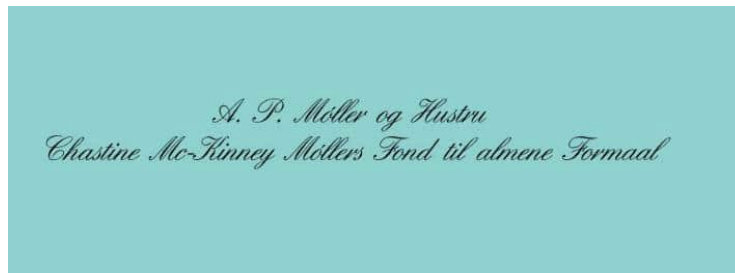
This is the amount of funding that the volunteer associations in Lild Strand have secured during the period January 2015 - April 2026.

90 % from foundations
10 % from municipal support



**NORDEA
FONDEN**
Vi støtter gode liv

**AAGE V.
JENSENS
FOND**



VELUX FONDEN

LAG Thy-Mors

LOKALOMRÅDERNES
UDVIKLINGSFORUM



Den Europæiske Union,
De Europæiske Struktur-
og Investeringfonde

"Den Europæiske Landbrugsfond for Udvikling af
Landdistrikterne: Europa investerer i landdistrikterne".



Melsen
Fonden



DEN
JYSKE
KUNST
FOND



Støttet med udlodningsmidler til friluftsliv

GUDRUN & PALLE MØRCHS MINDEFOND



3 Lild Strand: DNA, Identity, and Sense of Belonging

- Clearly defined development ambitions: attracting permanent residents and developing quiet, year-round tourism within the area's natural conditions and character
- A well-functioning village community in a secluded location, surrounded by sea and protected natural landscapes
- Coastal fishing culture, cultural heritage, history and authenticity
- A harmonious community between permanent residents and holiday-home owners
- Strong local engagement and initiative, and well-developed cooperation across the Hannæs peninsula, characterised by persistence in co-creation and extensive voluntary work
- A peaceful enclave offering space for outdoor life, community, presence and reflection

Quiet Tourism on the Terms of the Lild Strand Community

NO to mass tourism and concepts such as "*holiday factories*", "*destinations*", or "*theme park-style development*".

YES to increased settlement and a moderate development of tourism that respects the existing framework and identity of the place – focusing on quiet, small-scale tourism and positioning Lild Strand as the *quiet carriage* and dark-sky area of National Park Thy.

Locally there is strong agreement that the DNA of Lild Strand must be preserved:

- coastal fishing culture
- authenticity
- sustainability
- tranquillity and silence
- diverse nature experiences

A growing segment of tourists is expected to seek exactly these qualities: tranquillity, unspoilt nature without heavy infrastructure, dark night skies, views of the star-filled sky and a calm, non-commercial village atmosphere.

As an Outdoor Community in the Municipality of Thisted, Lild Strand offers direct access to the sea, fishing activities and extensive protected natural landscapes characterised by peace and quiet.

Its location at the end of a five-kilometre cul-de-sac road means that visiting Lild Strand – and experiencing its cultural and natural qualities – is always a conscious choice.

Recognition as the "quiet part" of National Park Thy may also contribute to attracting permanent residents and new holiday home owners.

Co-creation and Development of Quiet Tourism on Local Terms

The Municipality of Thisted's perception of the Hannæs / North Thy area is quoted in the municipal strategy plan: "*a particular tranquillity*".

Lild Strand is the sixth coastal village on Thy's west coast, but for reasons unknown it is not specifically included in municipal development strategies. However, the Municipality of Thisted has formally expressed its support for the Masterplan Lild Strand prepared by local residents.

Lild Strand differs from the other five coastal villages because it also has a strong connection to the Limfjord region, due to its location in North Thy on the Hannæs peninsula.

For this reason, the area is well suited to developing its own distinctive profile, both within National Park Thy as the park's "quiet part" and as an internationally certified dark sky area: Dark Sky Park Bulbjerg.

The local community works towards managed development, co-creation, responsible utilisation of local potentials and the development of quiet, small-scale tourism – in respect of nature and the values jointly formulated by permanent residents and holiday-home owners in this Masterplan Lild Strand.



4 Framework Projects in Masterplan Lild Strand

4.1 Nationalpark Thy from Agger to Bulbjerg

Time horizon: 2017- 2028

Responsible: The National Park Working Group, anchored in the Hawboernes Association, Lild Strand

“We should boast even more that we have Denmark’s most diverse nature... The National Park, the dune heath and the plantations all the way from Lodbjerg to Bulbjerg constitute the country’s wildest wilderness.”

“Thy on the Front Foot”, p. 29

It is widely agreed that National Park Thy has been – and continues to be – of enormous importance for the positive development of Thy and the Municipality of Thisted.

Expanding National Park Thy with the Vigsø–Bulbjerg stretch as the National Park’s “quiet carriage” is a cornerstone of the local strategy to:

- develop quiet, small-scale tourism in Lild Strand
- strengthen business development on the Hannæs peninsula
- attract permanent residents to Lild Strand and Hannæs

Lild Strand and Hannæs, with their unique assets – an authentic fishing settlement, protected wild nature, cultural heritage and an attractive hinterland including nature reserve *Vejlerne*, Kirsten Kjær Museum and Test Centre Østerild – can contribute positively to the continued development of National Park Thy and make “Denmark’s largest wilderness” even larger.

Since December 2023, the area has also gained an additional dimension through the international certification as Dark Sky Park Bulbjerg.

Both National Park Thy and the Danish Ministry of the Environment have expressed a positive attitude towards expansion. The local community on Hannæs / in North Thy supports the initiative, as do the other coastal towns within the Coastal Towns Network. In 2022, 42 positive consultation responses were submitted to National Park Thy.

The Process Takes Time – Historical Overview 2017 - 2025

25 March 2017

A development workshop was held in Lild Strand. Following this workshop, the idea arose to expand National Park Thy to include the coastal stretch from Vigsø to Bulbjerg.

July 2017

A public meeting was held in Hawboernes Hus, where there was broad support for the idea of inclusion in National Park Thy.

The National Park Working Group in Lild Strand subsequently initiated dialogue with the park’s management about the proposed expansion – from “Agger to Bulbjerg”.

22 September 2017

First meeting with the management of National Park Thy.

November 2017

Lild Strand contributed input to the Masterplan Hannæs-Østerild, submitted to the Municipality of Thisted as a consultation response to the Municipal Plan 2017–2029.

A key flagship project was the proposed expansion of National Park Thy for the benefit of the entire local area.

February 2018

The National Park Working Group prepared a complete land registry overview of the proposed expansion area.

Approximately 85% of the land is state-owned. Around 30 private landowners were contacted.

The documentation was submitted to National Park Thy together with the presentation "National Park Thy – from Agger to Bulbjerg".

April 2018

The Development Group in Lild Strand prepared Masterplan Lild Strand, version 1.0.

The masterplan, presentation and land registry overview were presented to the Mayor of Thisted at a meeting in April.

At the mayor's request, the material was subsequently distributed to all members of the municipal council.

The municipality stated that it would not take a position until the National Park's stance was known.

2018–2020

The National Park Working Group continued advocating for expansion and documenting local support, including consultation responses to the National Park Plan 2022–2026.

October 2020

National Park Thy held a public meeting in Hanstholm regarding potential expansion.

December 2020

The outgoing board of the national park decided to work towards an expansion.

January 2021

The newly appointed board adopted the same position.

2021–2022

National Park Thy's management entered into positive dialogue with the Ministry of the Environment regarding expansion.

The Municipality of Thisted did not express an official position during the process (2017–2022), apart from stating that it would listen to the position of the National Park.

Second half of 2022

National Park Thy submitted a formal request to the Municipality of Thisted regarding the expansion. The significance for the continued development of North Thy can hardly be overstated, given the positive impact the national park has had on areas south of Hanstholm.

Second half of 2023

A dialogue meeting with municipal politicians was held in September 2023.

August 2025

At an election meeting at Frøstrup Kro on 12 August, where the expansion of National Park Thy was one of the main topics, five out of six politicians expressed clear support for expansion.

October 2025

The National Park Working Group in Lild Strand was invited to a dialogue meeting with Else Østergaard and the new chair of the board, Karen Louise Erichsen, National Park Thy. Karen Louise Erichsen will present the matter at the board meeting in December 2025, where the board will consider whether National Park Thy should actively enter an expansion process.

If initiated, the process would include protected state-owned areas between Vigsø and Bulbjerg, as well as private landowners who wish to participate in the National Park.

Bulbjerg – a natural national treasure on the border between the municipalities of Thisted and Jammerbugt.

As Dark Sky Park Bulbjerg, with a visitor centre inaugurated in 2017 and well-developed parking and toilet facilities for approximately 140,000 visitors annually, Bulbjerg would form a magnificent northern endpoint of National Park Thy.

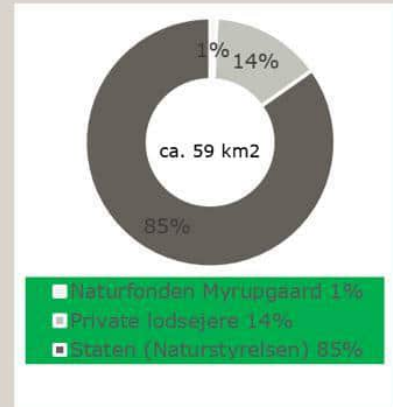
Bulbjerg – a natural national treasure on the border between the municipalities of Thisted and Jammerbugt. As Dark Sky Park Bulbjerg, with a visitor centre inaugurated in 2017 and well-developed parking and toilet facilities for approximately 140,000 visitors annually, Bulbjerg would form a magnificent northern endpoint of National Park Thy.



The red marking on the slide shows the expansion proposed by the National Park Working Group in Lild Strand – from Vigsø to the municipal boundary at Bulbjerg. This area covers approximately 59 km² of protected nature, of which 85% is owned by the Danish state and managed by the Danish Nature Agency (Naturstyrelsen Thy). An expansion would include both state-owned protected land and private landowners who wish to participate in the national park.

Nationalpark Thy – fra Agger til Bulbjerg

Foreslået arealudvidelse Hanstholm-Bulbjerg, i alt ca. 59 km²



Kortet er udarbejdet af Nationalparkgruppen i Lildstrand og viser de fredede arealer, som arbejdsgruppen foreslår optaget i NPT



4.2 "Dark Sky Park Bulbjerg", International Certification

Time horizon: 2019 –14 December 2023

The working group under Hawboernes Association obtained certification as Dark Sky Park Bulbjerg from the international organisation DarkSky.org on 14 December 2023.

DarkSky is a non-profit organisation whose objectives include:

- promoting eco- and astro-tourism and increasing awareness of dark sky areas
- protecting the natural night environment and raising awareness of light pollution, energy consumption and the importance of darkness for flora, fauna and human health

Certification must be renewed annually, requiring a report to DarkSky on light measurements, events and activities.

To obtain certification it is required that the area includes settlements with lighting adapted to DarkSky standards.



<https://www.darksky.org/>

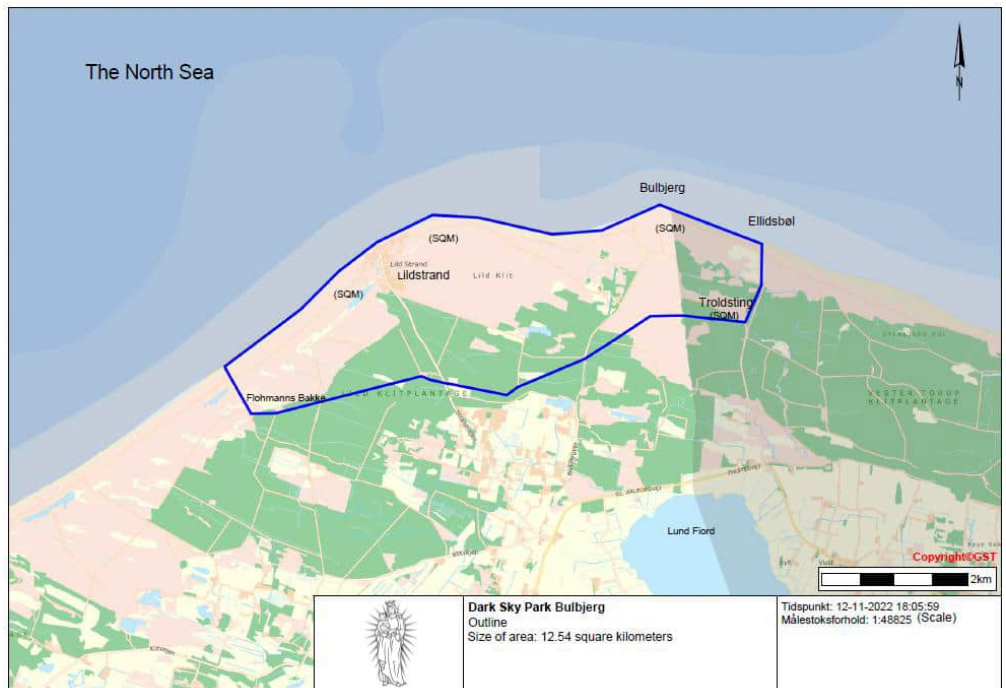
With the certification on 14 December 2023, Dark Sky Park Bulbjerg became the 22nd Dark Sky Park in Europe, the second in Denmark, the 122nd worldwide



Darkness, the Milky Way, energy, nature, culture, health and biodiversity

The area around Lild Strand – Troldesting – Bulbjerg has some of the darkest night skies in Denmark, combined with suitable infrastructure such as roads, trails, parking areas and shelters.

Certification as Dark Sky Park Bulbjerg represents an international attraction, supporting the development of quiet tourism and overall regional development in Thy. The park covers an area of 12,8 km².





4.3 The Planet Trail in "Dark Sky Park Bulbjerg"

Time horizon: April 2024 – July 2025. Inaugurated 5 September 2025. Budget 30,000 DKK

The Planet Trail, located near the town sign at the outskirts of Lild Strand, was created through cooperation between Dark Sky Park Thy and the Danish Nature Agency (Naturstyrelsen Thy), which supplied the stones used for the installation. The Dark Sky Park Bulbjerg project group carried out the project work, financed the stone carving and assisted the Danish Nature Agency in establishing the trail. The official opening took place during the nationwide "Night in Nature" event in 2025.

The trail is 843 metres long and illustrates the relative distances between the Sun and the planets at a scale of 1:7 billion.

Because of its short length, the trail is particularly suitable as an excursion destination for families with children.





5 Lild Strand Projects in the Masterplan

5.1 Coastal Terraces at the Lild Strand Landing Site

Time horizon: 2020-May 2022. Inaugurated 24 June 2022. Budget: 2,600,000 DKK

Coastal protection, recreational facilities and an improved working environment

The coastal terraces at the landing site in Lild Strand divide the site into recreational zones at the sides and a working zone in the centre, allowing fishermen to work undisturbed while visitors can comfortably enjoy ice cream, sea views and sunsets at a safe distance from the working area.

With their attractive design and high-quality concrete work, the terraces create a coherent and functional whole at the landing site by framing the working zone and transforming previously unused corners into inviting recreational spaces.

The Eastern Coastal Terrace gives people with reduced mobility the opportunity to get close to the sea and the beach, as the terrace has been designed with accessible access directly from the car park, the picnic shelter and the terrace area.

Space and facilities for visitors – and, equally importantly: the working space at the landing site has retained its original functionality and authenticity.

Project owner:
Association Lild Strand
Landing site



JOB DONE

5.2 Picnic House at the Lild Strand Landing Site

Time horizon: 2019 – inauguration June 2020. Budget 500,000 DKK

Operating costs are covered through voluntary user contributions and volunteer labour within the association Lild Strand Landingsplads.

A house/shelter of 42 m² has been built on the western side of the existing storage hall, adjacent to the car park, with large windows facing the sea and the landing site. The indoor space is fitted with washbasin and oak tables and benches. There is also a paved outdoor terrace with tables and benches. Toilet facilities are available in the winch house opposite.

**Before and
after.....**

lid



The picnic house, approximately 45 m², is located with elderly- and disability-friendly access in direct connection to the car park and the north-eastern coastal terrace, with views of both the sea and the landing site.

The guest book documents great enthusiasm among users from near and far.

Visitors have even come from Bhutan and written in the guest book – and an employee from the Danish Outdoor Council described it as "Denmark's wildest picnic house."





5.3 Lild Strandkær – Nature Restoration (Inner Part)

Time horizon: 2017- September 2020. Budget: 135,000 DKK

Lild Strandkær is a lobelia lake covering 3.4 hectares, located just south-west of Lild Strand.

Both the inner and outer parts of Lild Strandkær have been protected since 1977. The protection order is extensive, and the outer strand meadow is also designated as a Natura 2000 site.

Nature:

The area contains rare flora and fauna that should be protected and preserved.

Historical significance:

It is a significant and integrated part of the fishing settlement's history, including the cutting of ice for fish storage during the summer season.

Technical significance:

The drainage of Lild Strandkær is described in the protection order and is of practical importance for parts of Lild Strand village.

*Inner Lild Strandkær,
30 August 2020*



*Inner Lild Strandkær,
9 September 2020*





5.4 Communication of Cultural Heritage via Museum Thy

Time horizon: 2018 - ongoing

Cooperation with Museum Thy on communicating local history to residents, visitors / tourists and potential future residents.

The local approach made to Museum Thy in 2018, requesting a stronger focus on mapping and communicating the area's cultural heritage, resulted in the following initiatives being proposed / initiated / carried out by the museum:

1. Collection of oral history and memory material, including for use in a book publication
2. Communication at the landing site in the form of information boards
3. Guided heritage walks in Lild Strand (ad hoc since 2019)
4. Possible development of storytelling apps
5. Possible small-scale research project on Emil Nolde in Lild Strand in 1901

Museum Thy's book "Lild Strand i mands minde – fortællinger fra et fiskerleje" was published on 3 December 2020.

The book's author, historian and anthropologist Christina Gjørup Madsbøll of Museum Thy, presented the first copy of the book to the late Ellen Thomsen, who, after a long life in Lild Strand, contributed rich local historical insight as well as an extensive collection of photographs and articles.





5.5 The Creativity House in Lild Strand

Time horizon: 2018 – 2023. Inaugurated 14 April 2023. Budget: DKK 5,000.000

This section on The Creativity House in Lild Strand, has been prepared by the association's chair, Hanne Marie Kværndrup.



We may offer Denmark's only disability-friendly artist residence, with space for retreat and focused work. We offer the setting for creativity, exhibitions and recreational activities, with facilities for workshops with or without overnight stays, studios for ceramics, painting and visual arts – and room for nature-based tourism. Located centrally on the main street in Lild Strand – close to the landing site and the community hall Hawboernes Hus – the former village grocery shop now houses The Creativity House.

The Creativity House ensures step-free and easy access to all ground-floor facilities for people with disabilities. The building has been renovated in an energy-efficient and environmentally responsible manner. The Creativity House is the creative meeting point for local artists, residents, holiday-home owners and nature tourists.

The house's activities are rooted in nature, the recreational environment and the values that characterize Lild Strand. Creative workshops provide a framework for learning in and through nature, also for local nursery and school children. Nature is an important resource when it comes to reducing stress and finding calm and balance. For this reason, nature therapy is also part of the house's concept. We offer a disability-friendly artist residence, a workshop / exhibition space, and workshop facilities in the old stable and former storage rooms, adapted for creative activities.

The rooms and facilities of the Creativity House can also be rented in connection with other activities in Lild Strand.

Hikers and cyclists may also use the house, which functions as a B&B.

IN PROGRESS

5.6 Community Centre: Hawboernes Hus Version 2,0

Time horizon: 2021-2026, budget 2,000,000 DKK

In February 2021, a project group was established consisting of members of Hawboernes Association, who on an unpaid voluntary basis contributed with floor plans, condition reports, project proposals for phased renovation and cost estimates. During 2022–2026, dedicated members of Hawboernes Association contributed at least 1,000 hours of unpaid voluntary labour.

Hawboernes Hus is owned by the residents' association Hawboernes Association, Lild Strand. For generations, the house has been the highly appreciated focal point for local celebrations, meetings, exhibitions, markets and social and cultural events. Between 2021 and 2026, the building was expanded with a 25 m² storage room, a fully renovated kitchen, new energy-efficient appliances, a new roof with skylights and solar panels on the side building, floor renovation, improved ventilation, renewed water supply and drainage systems, and raised low doorways. The façade has been renovated with render mesh, paving has been laid around the building, ramps have been added, and soakaways installed for rainwater drainage. In autumn 2026 a new energy-producing solar roof will be mounted. Materials have been reused wherever possible, out of respect for the house's history and character, with careful consideration given to accessibility, energy consumption and sustainability. Autumn 2026 a new energy-producing solar roof will be mounted.

Hawboernes Hus, located on the main street in Lild Strand, was built by local residents in 1948.

The comprehensive renovation of phases 1 and 2, amounting to DKK 1.3 million, was completed in 2024. What remains is Phase 3 (autumn 2026), the replacement of the main roof. The aim is to replace the asbestos-containing fibre cement roof with a roof using solar roof tiles on the western side, enabling the building to become as energy self-sufficient as possible.

The photo was taken before renovation.





5.7 Analogue and Digital Orienteering i Lild Plantation

Time horizon: 2022-2024 Budget: 50,000 DKK

This section has been prepared by Øjvind Brøgger in cooperation with the orienteering initiative group.

Permanent / digital checkpoints offer varied and challenging routes through the magnificent natural environment of Lild Plantation, taking visitors to places they may never have been before – naturally with full respect for nature, flora and fauna.

Go whenever it suits you – at any time of day and any season of the year. The posts are always in place.

Plan your route via the website: short / long / criss-cross, depending on how adventurous you feel and what your energy level is like.

Maps are available through Findveji.dk.

In recent years, the initiative group has developed an orienteering map of Lild Klit and Plantation according to the international mapping standard ISOM 2017-2. The new Findveji.dk project described below has been developed on a voluntary, unpaid basis in cooperation with Hawboernes Association, with assistance from the Danish Nature Agency (Naturstyrelsen Thy) in establishing permanent posts. The Danish Outdoor Council supported the project with expenses for printing, poles, signs, reflectors, etc.

Whitsun Orienteering and Orienteering in Lild Strand

Since 2008, the initiative group, in cooperation with Hawboernes Association, has organised Whitsun Orienteering – a form of activity walk in which children, adults, older people, walkers and runners can all take part and get both physical exercise and mental stimulation. And, importantly, it is fun. The wish to make it fun has been the recurring theme of all our outdoor activities. The new orienteering map of Lild Klit and Plantation was used at Whitsun in 2022, when around 80 participants took part in a real orienteering event. Several participants commented that it was both challenging and exciting to find their way to places they had not previously visited:

“You dare to do it when you have a map to follow.”

Following the Whitsun event in 2022, a new idea and ambition emerged: to install permanent posts in various places in the area, which can be located using a map, and to connect the map to the Danish Orienteering Federation’s website Findveji.dk, which has approximately 90,000 unique visitors per year and allows users to download maps from all over Denmark. This has now been realized by the orienteering group in cooperation with the Danish Nature Agency.



5.8 Traffic Safety in the Lild Strand Area

Time horizon: 2017-2024 + 2025-2028

Traffic safety in Lild Strand was previously challenging for pedestrians and cyclists. During **2022–2025**, discussions resulted in improved traffic safety measures:

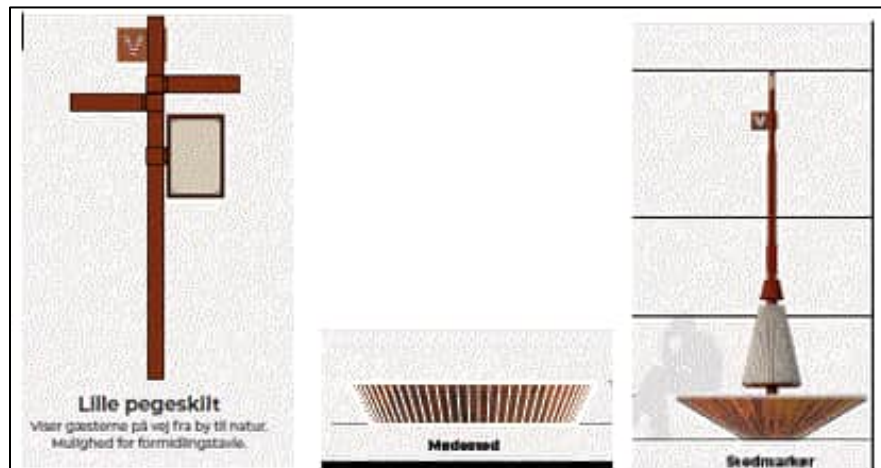
- a **2-1 road layout** (60 km/h outside the urban zone) on Strandvejen from Kystvejen to the landing site
- double road markings on **Gl. Aalborgvej** at the left turn towards Strandvejen
- speed-reducing road humps at the village sign
- clearer parking signage at the landing site and parking restrictions near the picnic shelter
- warning signs on the bend at **Strandvejen 19–20**

Dialogue on additional directional signage at the main road, more speed humps in Lild Strand and a **40 km/h speed limit in the built-up area** will continue in **2026** within a working group established by Hawboernes Association.

5.9 Development Project Kystsporet (The Coastal Trail)

March 2018, the Development Group in Lild Strand submitted a consultation response to the Danish Nature Agency regarding a supplementary section of National Cycle Route 1 between Lild Strand and Hjørdemål Klit. Lild Strand was allocated Wayfinding on the West Coast urban furniture. The benches "Meeting Place" and "Place Marker", together with a directional sign, were installed in Lild Strand in 2023–2024 in cooperation with Hawboernes Association.

Bench "Stedmarkør" (Place Marker) at the Hawboernes Hus. Bench "Meeting Place" and wayfinder at the signal mast square at the landing site. The benches is part of the "Wayfinding along the West-coast"-concept.



5.9.1 Renovation of the Signal Mast Square

The Association Lild Strand Landing Site, together with a group of volunteers, renovated the fence around the signal mast area during the summer of 2023, where the "Meeting Place" bench is located. Further renovation will be carried out in 2026.



5.10 Memorial and Reflection Space at the Lild Strand Church

Time horizon: 2025-2030 (?)

Indoor spaces for reflection are becoming increasingly widespread across Denmark. In such spaces, people think thoughts and conduct inner conversations about existential questions – usually indoors.

Many people visit Lild Strand – or choose to live there – precisely because of its open skies, expansive nature, space and tranquillity for reflection. Under the wide skies of Lild Strand, with the sound of the sea in the background, an outdoor “reflection space” would complement Lild Strand Church and the surrounding natural environment beautifully, and would help complete the story of Lild Strand as a quiet carriage, where calmness and reflection unique identity and history. The beautiful and simple church interior conveys a sense of intimacy, closeness and authenticity.

A reflection / memorial space under the open sky, located beside the church and bell tower and designed in harmony with the rugged surrounding landscape, would add an extra dimension to the area and to this very special church.

The arrow points to an area behind Lild Strand Church, east of the bell tower and set back from the quiet Strandkærvej.

In this area, it would be possible to establish a small and attractive space with seating and room for reflection – a peaceful and dignified place for anyone wishing, for a while, to reflect on life and death, and to remember those who are no longer with us.



6 Lild Strand to day...

6.1 Lild Strand Landing Site

The landing site, with its coastal protection, signal mast, winch and winch house as the base for both commercial and recreational fishing, is the focal point of Lild Strand and a contemporary expression of the area's deeply rooted coastal fishing culture. The landing site underwent a comprehensive renovation in 2016, supported by substantial funding from the A.P. Møller Foundation and the Municipality of Thisted. The picnic house and its outdoor terrace are well used by both residents and visitors. In 2023, the hauling winch at the landing site was renovated.

The landing site in Lild Strand serves both as a tourist destination and a working area.

The construction of the picnic house with outdoor terrace in 2020, followed by the establishment of the coastal terraces at the landing site in the first half of 2022, has added the recreational facilities that the area had previously lacked.

At the same time, the working area of the landing site has retained its original form, functionality and authenticity.

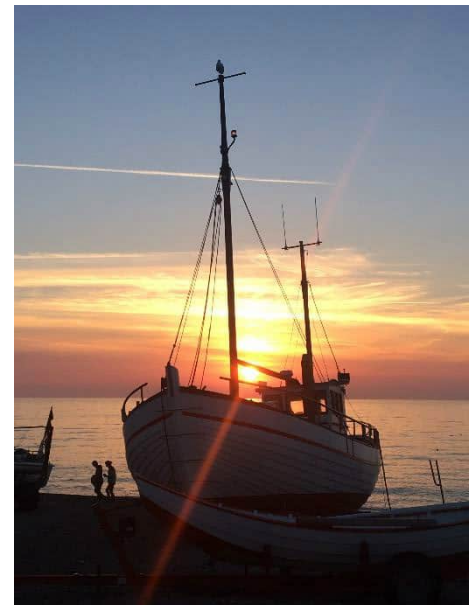


6.2 Lild Strand Boat Guild – living UNESCO Cultural Heritage

The Boat Guild has approximately 40 members, who come from both near and far to fish recreationally using the coastal boat "Skarreklit". The guild is affiliated with Han Herred Havbåde, which is the only place in the Nordic region where clinker-built boats are still produced for commercial fishing. In December 2021, the Nordic clinker boat tradition was inscribed on UNESCO's Representative List of the Intangible Cultural Heritage of Humanity. The use and operation of "Skarreklit" by the Lild Strand Boat Guild therefore form part of the continuation of a proud cultural tradition.

Photo: "Skarreklit" at the Lild Strand Landingsite.

<https://www.havbaade.dk/>



6.3 Church, Associations and Community Life

- *Lild St* Lild Strand Church, in the parish of Tømmerby, is an active church where services and cultural events are held, including music events, evening songs and lectures.
- Hawboernes Association: <https://hawboerne.dk/>
A residents' association with approximately 190 members, including both permanent residents and holiday-home owners. The association owns and operates Hawboernes Hus, which provides the setting for residents' meetings, development workshops, the annual fish buffet, music events, communal dining, markets, exhibitions, Christmas celebrations and more. The building is also rented out for private events.
Renovation: see section 5.7.
- Lild Strand Fish and Winch House Association:
Commercial fishermen, the Lild Strand Boat Guild "Skarreklit", and the many recreational fishermen in the local area all use the facilities at the landing site. It is an active association with a stable membership.
- Association Lild Strand Landing Site:
Responsible for the development of the landing site.
- Svenstibakkevej Property Owners' Association:
www.svenstibakkevej.dk

6.4 Trade and Infrastructure

Trade:

- Lild Strand Smokehouse, Ole Eriksen, Rørslettevej
- Bjarne Holmgaard's fish sales at the landing site
- "Lille Viol" shop (arts and crafts / natural décor) at the landing site
- Arte Museum & Gallery, Krinkelkrogen
- The Creativity House, Strandvejen
- Summer kiosk "Hawhuset", at the landing site, open June–August

Infrastructure

- Church and community hall with toilet facilities
- Authentic, renovated landing site with parking spaces, picnic shelter and toilet
- Winch house with access for visitors
- Coastal fishing from the beach, boats, signal mast and "mini-museum"
- Coastal terraces on both sides of the landing site
- Coastal protection west of the landing site, at the landing site itself, east of it, and along private plots further east
- Playground, football field and pétanque court on Svenstibakkevej
- Dog forest in the plantation near Lild Strand
- Mobile phone mast and fibre broadband
- Dark Sky-adapted street lighting, snow clearance and waste collection
- Newly renovated water mains
- Public transport: FlexTur and PlusTur



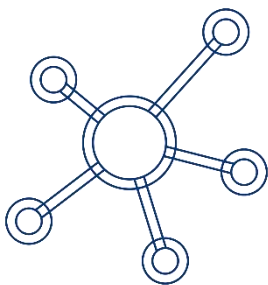
6.5 Lild Strand and the EU: Smart Village – EU Smart Rural 27

Lild Strand's ongoing efforts to identify and develop the village's local potential have led to participation in the "Smart Rural 27" project, supported by the **European Commission**.

The aim of the EU project is to inspire other European villages by demonstrating how communities can act SMART on the basis of their existing local conditions. The team behind EU Smart Rural 27 found three themes in particular to be of interest:

1. The well-functioning cooperation between permanent residents and holiday-home owners within the residents' association Hawboernes Association, with Hawboernes Hus as a key meeting place. The continuously updated Masterplan Lild Strand is an important tool in this process.
2. Lild Strand builds on place-based potential, using tranquillity, nature and space for reflection as strengths and focal points. A research article in Elsevier describes how the masterplan promotes "quiet tourism".
3. The Dark Sky group has achieved international certification as Dark Sky Park Bulbjerg, thereby turning the deep local night darkness into an attraction. This is described as "yet another example of how a village has acted SMART on the basis of its given conditions."

<https://www.smartrural27.eu/village/lild-strand/>



6.6 Cooperation in the Kystbyernes Netværk (Coastal Towns' Network)

Cooperation and co-creation are the key principles of the Coastal Towns Network, which supports the shared cultural and interest-based community among the coastal villages along the west coast of the Municipality of Thisted: Agger, Stenbjerg, Vorupør, Klitmøller and Lild Strand.

<https://hawboerne.dk/kystbyernes-netvaerk>

7 Lild Strand as case in Innocoast-project

“Lild Strand has served as a case study in the research project ‘Innovation in Danish Coastal Tourism’ (2016–2019), funded by the Innovation Fund Denmark.

The project results show that there are significant and interesting development opportunities for tourism and leisure activities in Lild Strand. This will benefit both residents and visitors.

There is an extraordinary level of activity and entrepreneurship among residents and holiday-home owners. Lild Strand has the potential to become a model example of how harmonious development can be created in small coastal towns in Denmark.”

(Professor Jon Sundbo, Roskilde University, June 2019)

*Development workshop no. 1
for residents and holiday owners
in Hawboernes Hus 2017*



Professors Jon Sundbo, Jørgen Ole Bærenholdt and Lars Fuglsang from Roskilde University (RUC), Denmark, followed the coordinated local efforts in Lild Strand during the InnoCoast project (2016–2019). Their research focused on local co-creation initiatives and development workshops held in Hawboernes Hus.

One of the results of these development workshops is the **Masterplan Lild Strand**, which is continuously updated in line with local developments.

In the third quarter of 2021, the researchers published an article on Lild Strand, “small tourism”, and the Masterplan for Lild Strand in the internationally recognised scientific journal, Elsevier – Journal of Rural Studies 87 (2021) 169-180:

Elsevier – Journal of Rural Studies 87 (2021) 169–180
***A coalition for “small tourism” in a marginal place: Con-
figuring a geo-social position.***

“The case study focuses on the coastal hamlet of Lild Strand, a marginal place in Northern Jutland, Denmark, whose permanent population and fisheries are in decline. Since 2017, a coalition of locals and second-home owners have mobilized for several parallel initiatives, including a series of development workshops and other events, a master plan for Lild Strand 2030, plans for the extension of a national park, new small-scale tourist designs, mass-media presence, and various lobbying for development. It is a case of citizen-driven tourism where a coalition of actors enthusiastic about the place seek slow and modest tourism activities, drawing on resources belonging to the area and its natural and cultural heritage. Key findings include how engagements emerged from familiarity with, detailed descriptions of, and plans for the local environment, and how the coalition managed to come about by uniting voluntary work across permanent and temporary residents as well as other actors committed to developing the location. Common to the commitments of this coalition is the relationship and engagement with the local environment as a common good. We suggest that the making of the coalition should be understood as a configuration of a geo-social position that is central in driving the mobilization. This research illuminates general conditions and possibilities for the development of rural communities in peripheral regions. There is a need to collect knowledge on how different types of tourism can be used to help actors address local needs in such areas.”